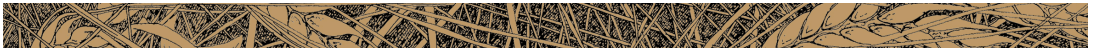
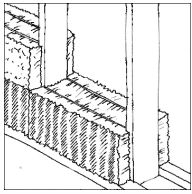


U2 – Infill and Prefab

| | | |
|---|--|---|
| <p>Objectives:</p> <p>Trainees ...</p> <ul style="list-style-type: none"> • know different prefabrication and modular building methods • know different structural options • know the dis-/advantatges of every solution • are aware of health and safety issues related to co-workers, building site, machinery, equipment, PPE (personal protective equipment) and the issues specific to work with straw and straw bales. • can organize building sites at all stages (i.e.: take responsibility to leave the building site rain- and windproof, keep strawstacks fire protected, remove loose straw after work,...) • can take responsibility for the requirements of straw building in a “normal” building routine • know the details (window, roof junction,...) for prefabricated walls and modules <p>Methods:</p> <p>Practical training, supervising training work</p> | | <p>Trainer:</p> <hr/> <p>Place: Classroom</p> <p>Duration: 2 days</p> <p>Equipment wood screws straw bales tools</p> |
| <p>T H E O R Y</p> | <ul style="list-style-type: none"> • Different construction options for prefabricatio and their characteristics and bale requirements. • Fixing bales with different techniques • Compressing bales with different systems • Advantages and disadvantages of infill conctruction techniques • Details of connections: foundation, corners, windows and doors, roof, etc. • Preparing different surfaces for plastering • Viewing and study of existing building samples | <p>Documents:</p> <p>Trainer sheet T1</p> <p>Info sheet I1 Prefab</p> <p>Text sheet X1</p> <p>Slide show</p> <p>Evaluation</p> <p>Multiple choice</p> |
| <p>P R A C T I C E</p> | <p>Task</p> <ul style="list-style-type: none"> • Working groups • Preparing wooden frames and structures • Infill straw bales in standing position (“on edge”) • Compress the bales with different techniques • Fixing the bales in the construction • Airtight/windproof installation of a window • Shaving the bales, if necessary • Preparing bales/boards for plastering | |
| <p>Organisation</p> <p>20 straw bales for each group Wood parts, boards and joints (screws, nails, brackets, staples) see material list Tools see tool list</p> | | |



U2 – Infill and Prefab